



MONTHLY MEMBERSHIP PROGRESS REPORT

District 318 B

Results as of: 06/30/2018

GMT: N S SANKAR

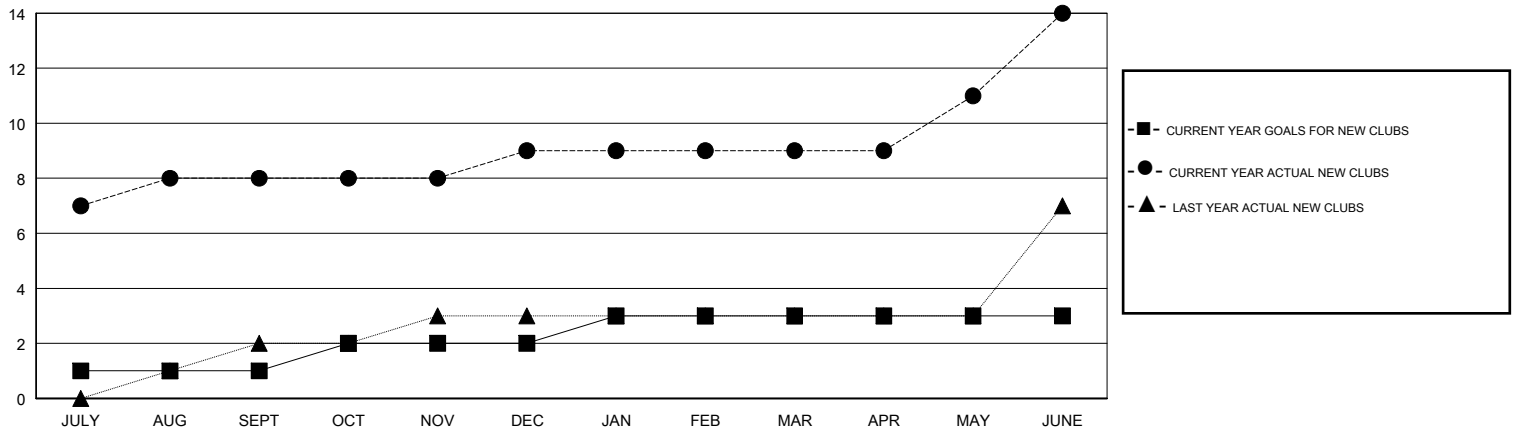
LOCATION INDIA

GMT CA

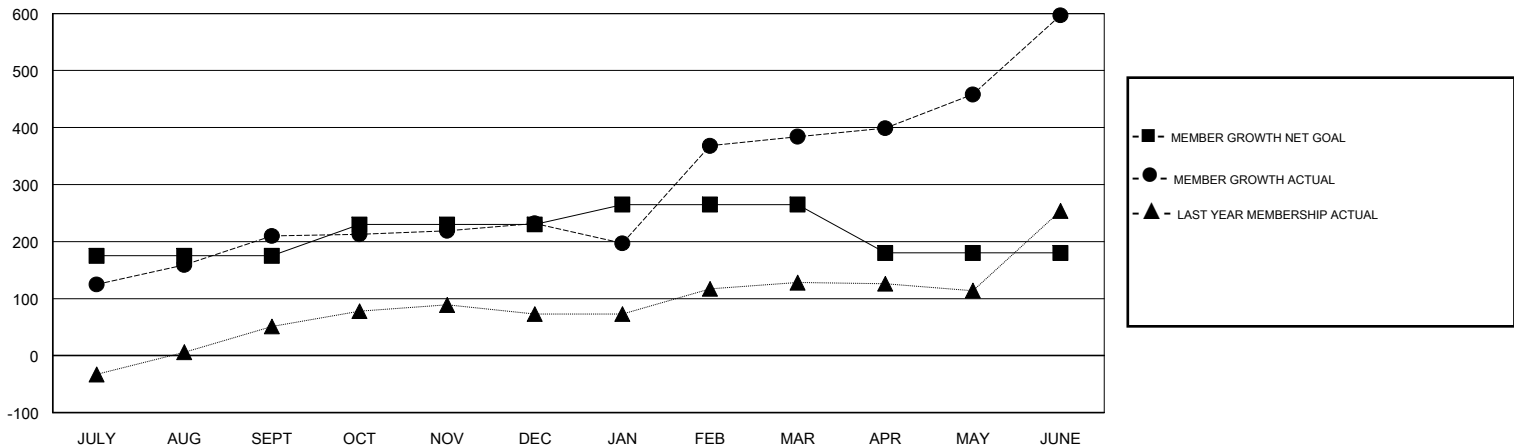
Clubs			
RESULTS FOR 2017-2018			
QUARTER	NEW CLUB GOAL	NEW CLUBS	DROPPED CLUBS
JULY/AUG/SEPT	1	8	1
OCT/NOV/DEC	1	1	1
JAN/FEB/MAR	1	0	1
APR/MAY/JUNE	0	5	3

Members			
RESULTS FOR 2017-2018			
QUARTER	MEMBER GROWTH NET GOAL	MEMBER GROWTH ACTUAL	DROPPED MEMBERS ACTUAL (including transfers)
JULY/AUG/SEPT	175	325	114
OCT/NOV/DEC	55	98	74
JAN/FEB/MAR	35	233	71
APR/MAY/JUNE	-85	435	206

GOALS AND ACTUAL NEW CLUBS CUMULATIVE



GOALS AND ACTUAL MEMBERS CUMULATIVE



DROPPED CLUBS: 6

99 CLUBS OF 125 ADDED 1 OR MORE NEW MEMBERS

GENDER DISTRIBUTION

MALE 3,544 (84.91%)
 FEMALE 630 (15.09%)
 Women Percentage Fiscal Year Goal: 10%

DROPPED MEMBERS

[CLICK HERE FOR CUMULATIVE MEMBERSHIP DATA](#)

DECEASED	16
CLUB CANCELLED	106
OTHER	343
TOTAL	465

TOTAL FAMILY UNIT MEMBERS	0
FAMILY MEMBERS PAYING HALF DUES	0